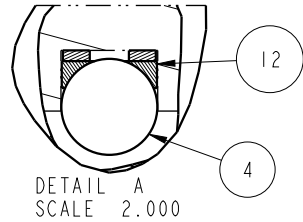
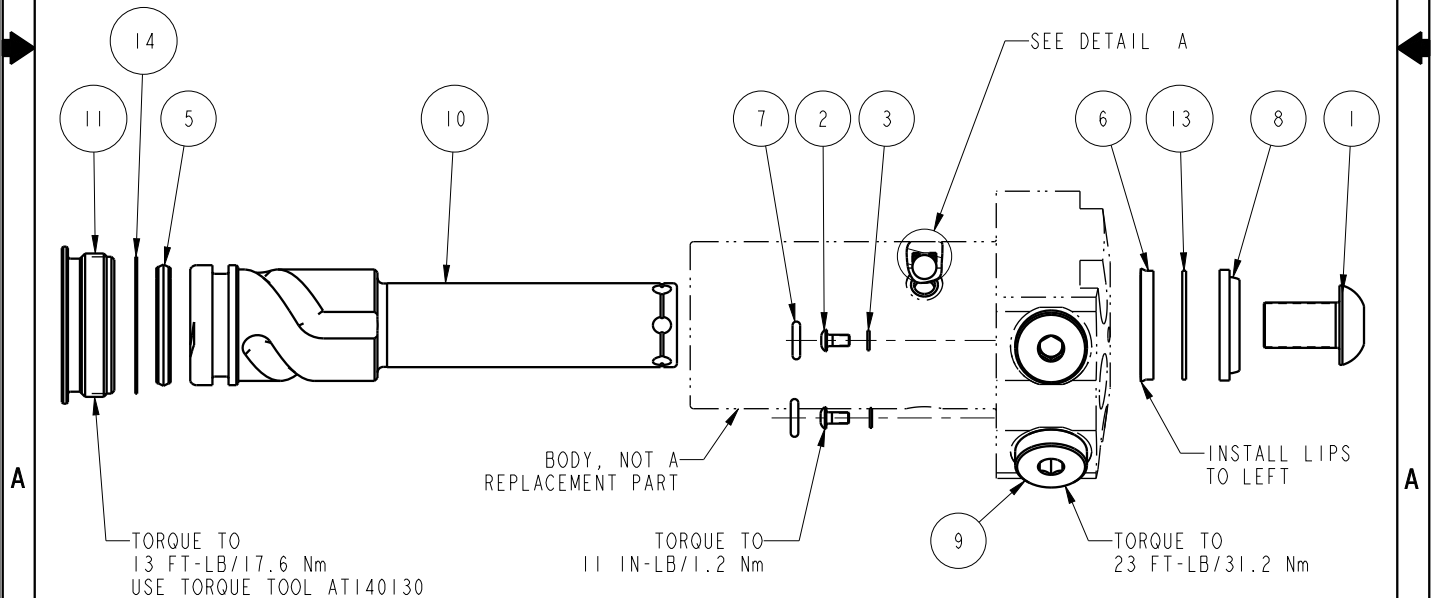



NO	QTY	PART NO	DESCRIPTION	STD SEAL KIT	FKM SEAL KIT
1	1	21500010	SCREW, CAP, BTNH, M12 X 20, ALY		
2	2	21500019	SCREW, CAP, BTNH, M3 X 6, ALY		
3	2	21500200	WASHER		
4	3	23600002	BALL, STEEL, ALLOY, .250	X	X
5	1	39011030	SEAL,CROWN,1-1/16x1-1/4x5/32	X	39V11030
6	1	39011046	SEAL,BEVEL W/HEEL INSERT,7/8 x1/8 x1 1/8	X	39V11046
7	2	39051076	O-RING, (6mm x 2)	X	39V51076
8	1	39053000	WIPER,SNAP-IN, (7/8)	X	X
9	2	43068006	PLUG, PORT, HOLLOW HEX, G1/4		
10	1	47511304	PLUNGER,SC,HS,11.6KN,RH		
11	1	81400030	RETAINER,SC,HS,2600		
12	3	90199958	ASSY,BALLSEAT,SC,2600/5000	X	X
13	1	39F54002	BU RING, (-212 CUSTOM)	X	X
14	1	39T55003	GASKET, (-124)		
N/A	N/A	60414503	KIT, SEAL, STANDARD		
N/A	N/A	6V414503	KIT, SEAL, FKM		



PARTS LIST	 VEKTEK VEKTEK, INC. 1334 E. SIXTH AVE. P.O. BOX 625 EMPORIA, KS. 66801 U.S.A.		
	ASSEMBLIES AFFECTED 41461121		
<table border="1"> <tr> <td>SIZE A</td> <td style="font-size: 2em;">MPL1418</td> <td>REV D</td> </tr> </table>	SIZE A	MPL1418	REV D
SIZE A	MPL1418	REV D	

D	5279	RELEASE	ALS	4/25/24
REV	IN ACCORDANCE WITH ECN	EFFECTIVE DATE	REVISED BY	DATE
DRW BY:	DRAWING STATUS: Released			
DATE: 03/13/13	PRODUCTION APPROVED FOR RELEASED STATUS ONLY			

SHEET 1 OF 1

FORM FEG035_PL_ASIZE, REV. B